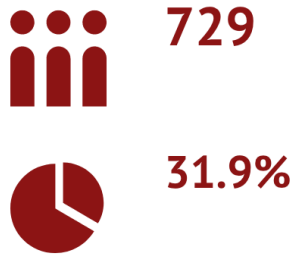


# Women on the Stanford Faculty at a Glance

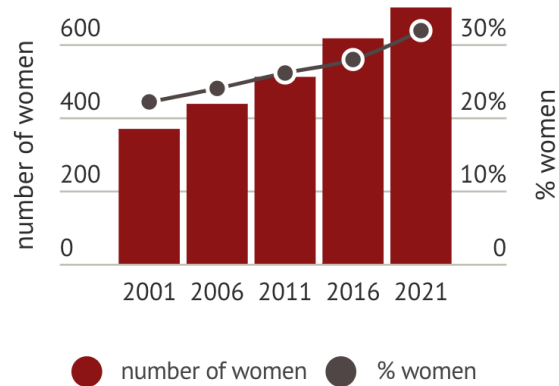
Based on *preliminary data* about professorial faculty as of September 15, 2021; for reference only

## Women are

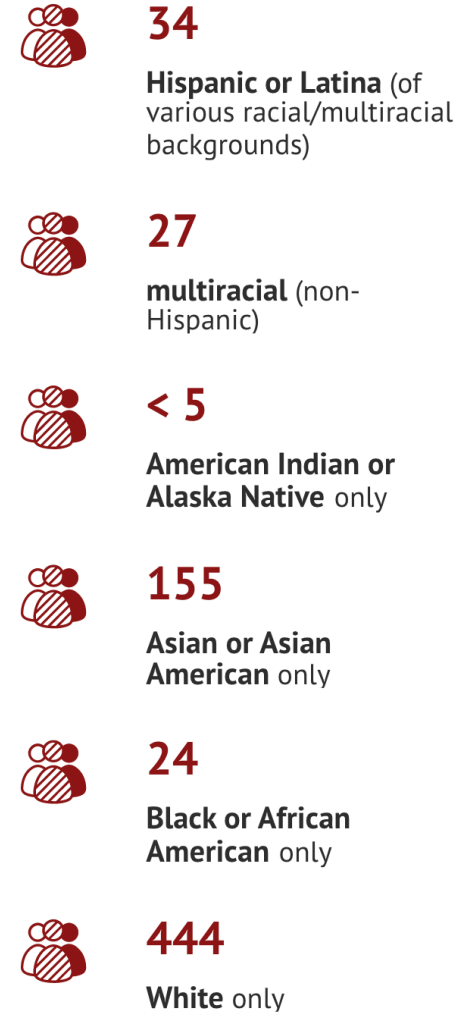


of 2,288 faculty members at Stanford

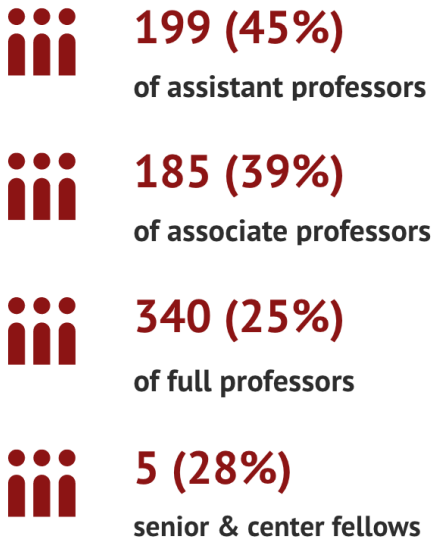
## Faculty Women Growth, 2001-2021



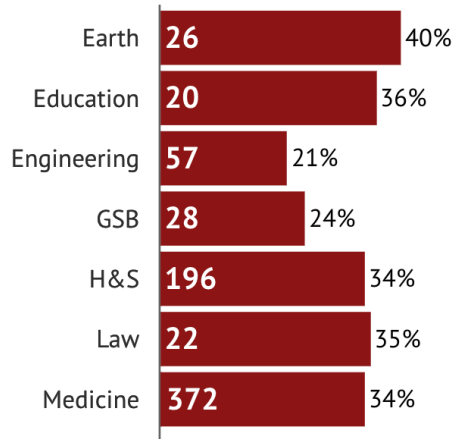
## Faculty Women Self-identify as



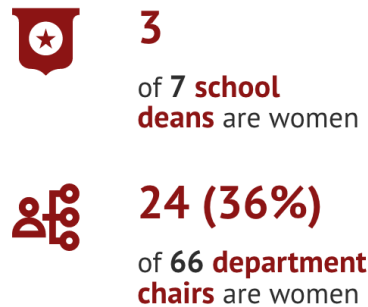
## Rank



## Number and % Women by School



## School & Department Leadership



For additional data about Stanford faculty, visit: **OFDDE Faculty Demographics** <https://facultydevelopment.stanford.edu/data-reports/faculty-data> | **Stanford Facts** <http://facts.stanford.edu> | **Stanford IDEAL Dashboard** <https://ourvision.stanford.edu/design-teams/ideal-homepage/ideal-dashboard>